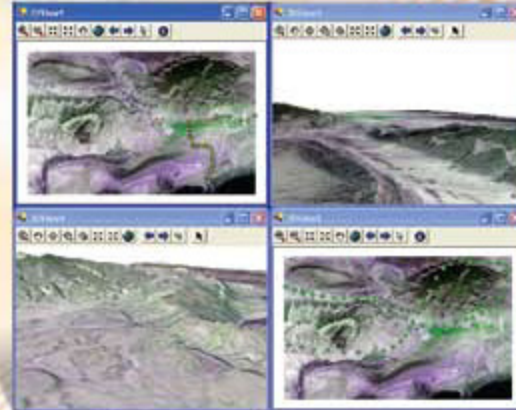
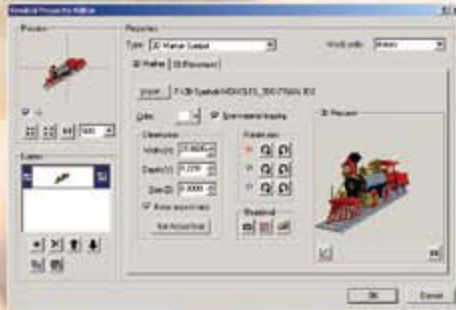
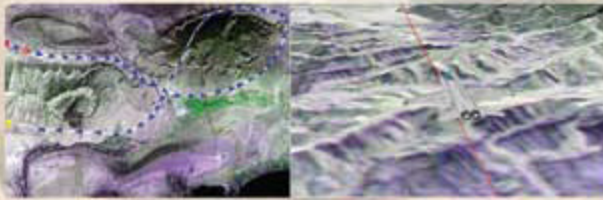


# Automatic Vehicle Location in 3D Space (AVL3D)



## Automatic Vehicle Location in 3D Space (AVL3D)

### System Features:

- **Creating Multiple view**  
We can have multiple independent view of environment each with different settings. For example in the above picture there are 4 views. Two of them are Map view and the others are 3D view with different zoom and pan settings. In each 3D view we can rotate the model for viewing from the desired viewpoint.
- **Showing the Mobile Unit Path**  
We can show the path of each mobile unit in Map view and 3D View. In 3D View for the Vehicles like airplane it is possible to show shadow path on the earth.
- **Personal Monitoring**  
We can use the system as a personal monitoring with connecting any standard GPS via Serial /USB port. GPS data can be logged with desired Interval.
- **Supporting 3D symbols**  
Any 3D Symbols with 3DS, VRML, OpenFlight format and 2D symbols with BMP or EMF format can be set as the symbols of mobile units in Map View and 3D View.  
The Attribute of symbols like Size, Color, Rotation can be modified.

- **Showing Mobile Unit Information**  
By selecting the mobile units, some information of them like position, heading and speed can be showed in Online or offline mode.

### Other Features:

- Using databases like Access, SqlServer or oracle.
- Changing visibility of layers in map or 3D view.
- Replaying saved tracking for analysis.
- Defining static camera on the scene and switching between them during monitoring.
- Automatic zooming and panning.

### Development Environment:

Operating System :	Windows XP
Language :	C#
Database :	Access & Sqlserver
Platform :	Visual Studio .NET
SDK :	ArcObject Development Kit

### Installation Procedure:

- **Install ArcGIS 9.0**
  - a. For preparing the Map and 3D Models you need to install ArcGIS Desktop 9.0
- **Install AVL3D from the Installation CD**
  - a. There is no limitation on the number of Mobile Unit
  - b. Any database like Access and sqlsever can be select as the default database for storing and reading Mobile units information.

### Supporting Issues:

- One year free support.
- Bug reporting and answering via Email

Automatic Vehicle Location in 3D Space (AVL3D)